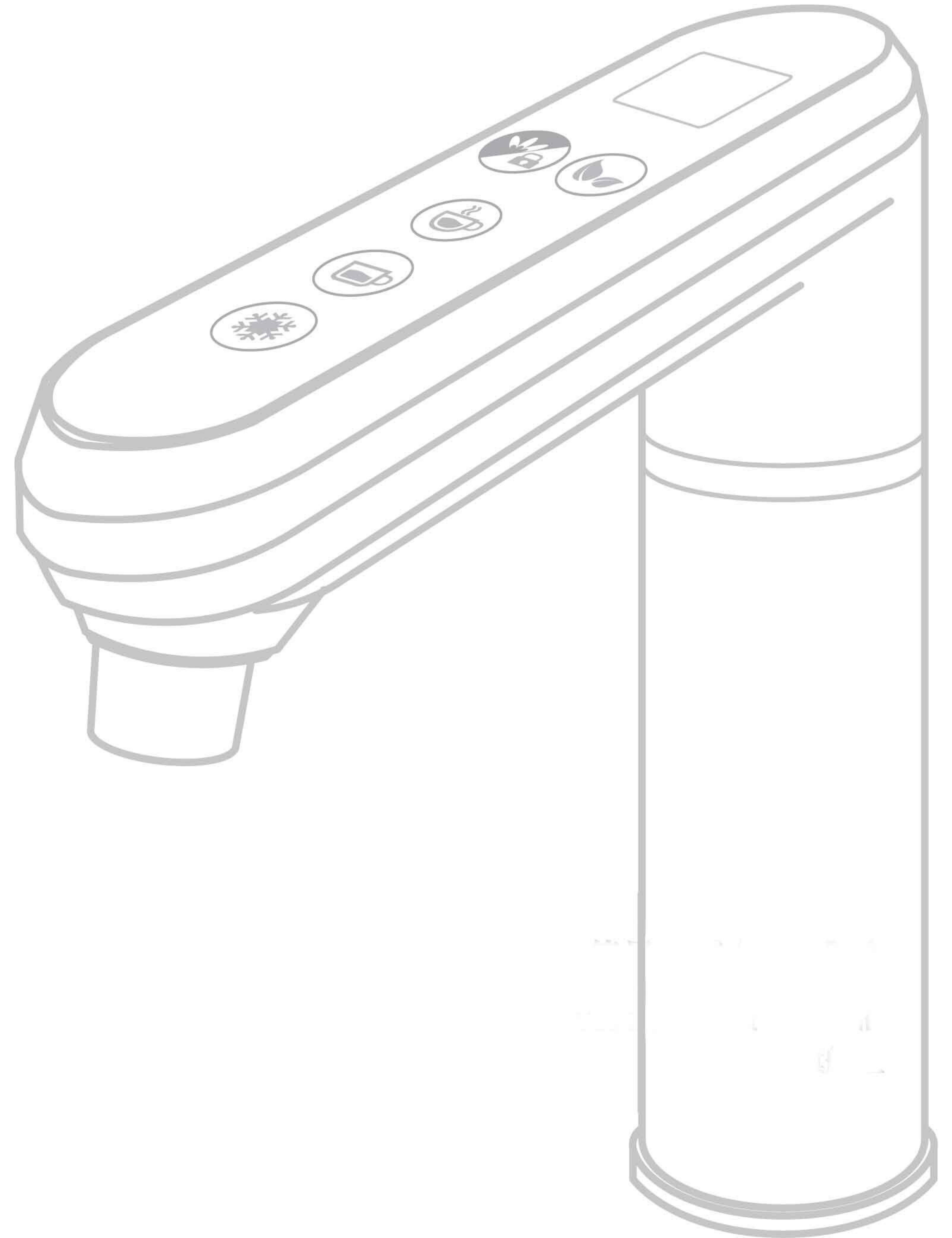


# PC-888

Touch Panel  
User Instructions



**puricare**

**Water**DISPENSER



**Dear customer,**

Thank you for your purchase of our product. It will enhance the quality of life, bring the convenience and health, and lead you enjoy the delights of new taste and new feeling.

To ensure your rights, and provide comprehensive after-sales service to you, we prepare for you the installation manual and warranty services.

1. LIMITED WARRANTY
2. IMPORTANT NOTICE
3. INSTALLATION GUIDELINE
4. SPECIFICATION
5. WARNING NOTICE

**Caution!!**

- 1.Any electrical equipment and piping installation should be all performed by qualified electrician or technician.
- 2.Make sure the house electric ground connection conformed to local related regulation to ensure the electric safety.  
Noted: Please do not use the extended line.
- 3.This product must be connected with proper rated voltage to avoid any abnormality happened.
- 4.The operating water pressure for the water dispenser is 14~36psi (1~2.5kg/cm<sup>2</sup>).Any inlet water pressure higher than this would cause the pipes become loose and leakage, which might be suggested to install the pressure reducer in advance.
- 5.Be careful and make sure if the hose kit and tubes are not twisted or damaged.(Bend radius should be > 40mm)
- 6.The inlet water source must be the qualified tap water. Be sure to install the standard drinking system like RO system or Ultra filtration system.
- 7.Please do not use the unknown filtration system or filter media. Any unqualified incoming water source will cause the water dispenser defective and reduce the drinking water quality.
- 8.Do not let children and elder person use the machine without watching.
- 9.Do not hold the cup body while charging hot water to avoid scalding.
- 10.Do not charge the water with narrow or shallow cup to avoid water splashing out.
- 11.Do not wipe the panel by using chemical or strong acid or base cleaner.
- 12.If the signal on main panel shows “EE” “EP” “E1” “E2” “E9” and so on, Please turn off the power and call for service.



## SPECIFICATIONS

PC-888

Type	Counter Top / Undersink
Hot water power	750W~1000W
Cold water power	<b>210W</b>
Hot water capacity	4L
Cold water capacity	2L
Dimensions	W290*D460*H400mm
Safety device	all series has circuit breaker and a safety fuse
AC power supply	230Vac 50Hz

Notes: 1.hole size "30mm" on the table  
2.Flow rate is according to inlet flow rate.

## LIMITED WARRANTY LIMITATION AND EXCLUSIONS

This drinking water product is a tasteful design with elegant materials. Please be sure to follow the instruction manual to maintain the appearance and product function. Warranty is void if product failure or damage results from any one of followings.

- 1.The product serial number can not be recognized which has been defaced, modified or removed.
- 2.Warranty label is damaged, altered, or removed.
- 3.Repair products are not properly packed which incur any damage on the way back to our company.
- 4.Not use this product in compliance with the attached manual, any improper operation or damage caused by setting error.
- 5.Warranty doesn't extend to any product or any problem that is defected due to misuse, safety careless such as unstable power supply, voltage does not match ... and so on. Or due to force majeure, such as fire, flood, earthquake, electric shock, the storm.
- 6.Defects incurred from any component or accessory which is not authorized or approved by our company.
- 7.Any damage caused by unapproved components or other products or any related equipments that is not under our authorization.
- 8.Any damage caused by the component maintenance, appending or modification which is not done by our qualified electrician.
- 9.Any defects are not caused by the material or workmanship itself after we did the evaluation.
- 10.Any product under maintenance, our company will not bear any responsibility for the storage contents change, deletion, and modification if any. Returned to the customer will be reset to the original state while customer purchased.
- 11.Our company has no responsibility for any damage of the hardware, software, plug-in features, parts, replacement products and accessories that provided by third-party. Please remove it all before sending back to us for repair.

### CONDITION OF WARRANTY

Our product of RO system, filtration system and water dispenser are warranted to the original owner to be free of defects in material and workmanship from the date of ex-factory delivery for 1 year.

We will offer free replacement within 1 year of warranty period, (excluding the consumables like RO membrane and replaceable filters).



## IMPORTANT NOTICE!!



In order to provide the best services to all customers, please fill our product registration card and send back to us.

We continue to pursue the best quality & services, if you have any question, please feel free to contact us. We'll be glad to hear from you and be of help to you



### CAUTION

RISK OF ELECTRIC SHOCK  
DO NOT OPEN



CAUTION: TO REFUSE THE RISK OF ELECTRIC SHOCK,  
DO NOT REMOVE COVER (OR BACK).  
NO USER-SERVICEABLE PART INSIDE.  
REFER SERVICING TO QUALIFIED SERVICE PERSONNEL.



### Notice!!

The streak in the triangle is to warning the user there is some non-isolation dangerous voltage inside the product, and it might cause some dangerous.



### Caution!!

The non-isolation dangerous voltage inside the product might cause an electric shock. To avoid the danger of electric shock, please do not open the cover of the unit. If you have any problem or any question, please contact the regional agent or our customer services department to maintain, repair or change the components for you. Please do not open or change any part by yourself for your safety.

To prevent the dangerous from the fire or electric shock, please do not put the unit in wet or high humidity environment and make sure the electric plug is completely well connect in.

Non-poison material: the product is made of Non-poison, Anti-rust steel material, it is safe to use this product and it will not pollute the environment too.

## Step Six Final installation and inspection

1. Use the wrench to check the pipe is tightened or not.
2. After installation, operating the dispenser. When the water gets in the machine, you may the operation, function, or any leakage problem.
3. When first time using the machine, there might be some air blocked inside the pipe, so please push the "Cold/Ambient water" button and wait until the water come out smoothly.
4. plug in the power plug into power socket with ground wire, and then turn on the power of earth leakage circuit breaker and the electronic tap.  
Press the "re-boil" button for 5 seconds, the power will turn on; to turn off the power, press 5 seconds again.
5. The thermostat for cold water is set up at #4 when the unit is completed by factory, please don't adjust the thermostat to #5 or #6, as it might lead the cold water tank frozen and easy to break and cause leakage.
6. When the compressor is working, please check if any cooling water is discharging from cooling water outlet. (for cold and hot model)



### Warning

Warning: Every kind of filtration is different, and the time for making pure water is also different, please be patient for water inlet completed

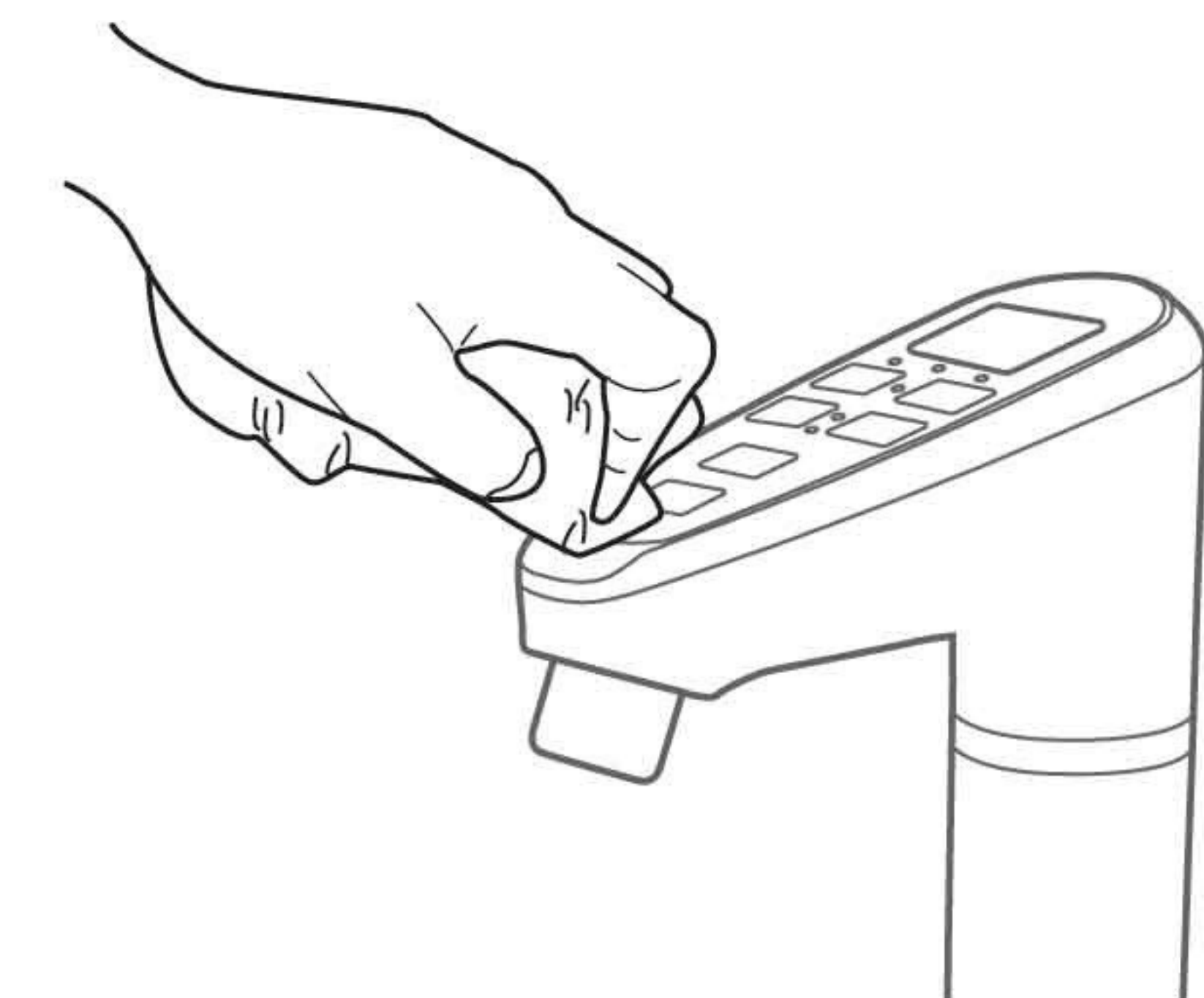
## INSTALLATION GUIDELINE

### Power on

1. First boiled water may have peculiar taste and smell from the pipe or sink of the dispenser.
2. Please waste the first 4 liters of hot water, and first 2 liters of cold/ambient water for the first run.
3. After the machine is set up, please run the machine over 40 minutes and the temperature will reach 100 degree C.
4. If the machine has not been used for a period, please re-do above steps.

### How to get the water

1. You can choose hot water or cold water.
2. Please put the cup in the water tray and keep suitable distance from the
3. Press the hot or cold water button on the panel; wait until the water water inlet.
4. Wait 2~3 seconds after taking the water to get the water drop. comes to the cup.



Clean main panel: Do not wipe main panel area by chemical, strong acid or strong base cleaner.



### Warning

Do not let children or elder person to use the machine without help to avoid being scalded.  
Do not hold the cup when taking the hot water to avoid hot scalded your hands.  
Do not use narrow cup or shallow cup, in case the water will splash out when taking the water.



INSTALLATION GUIDELINE

Installation

Step three Put the dispenser into the closet.

- 1. Adjust the best height and stable position for dispenser before install in.
- 2. Be careful when putting the machine in the closet and make sure if the hose kit and tubes are not twisted or damaged.

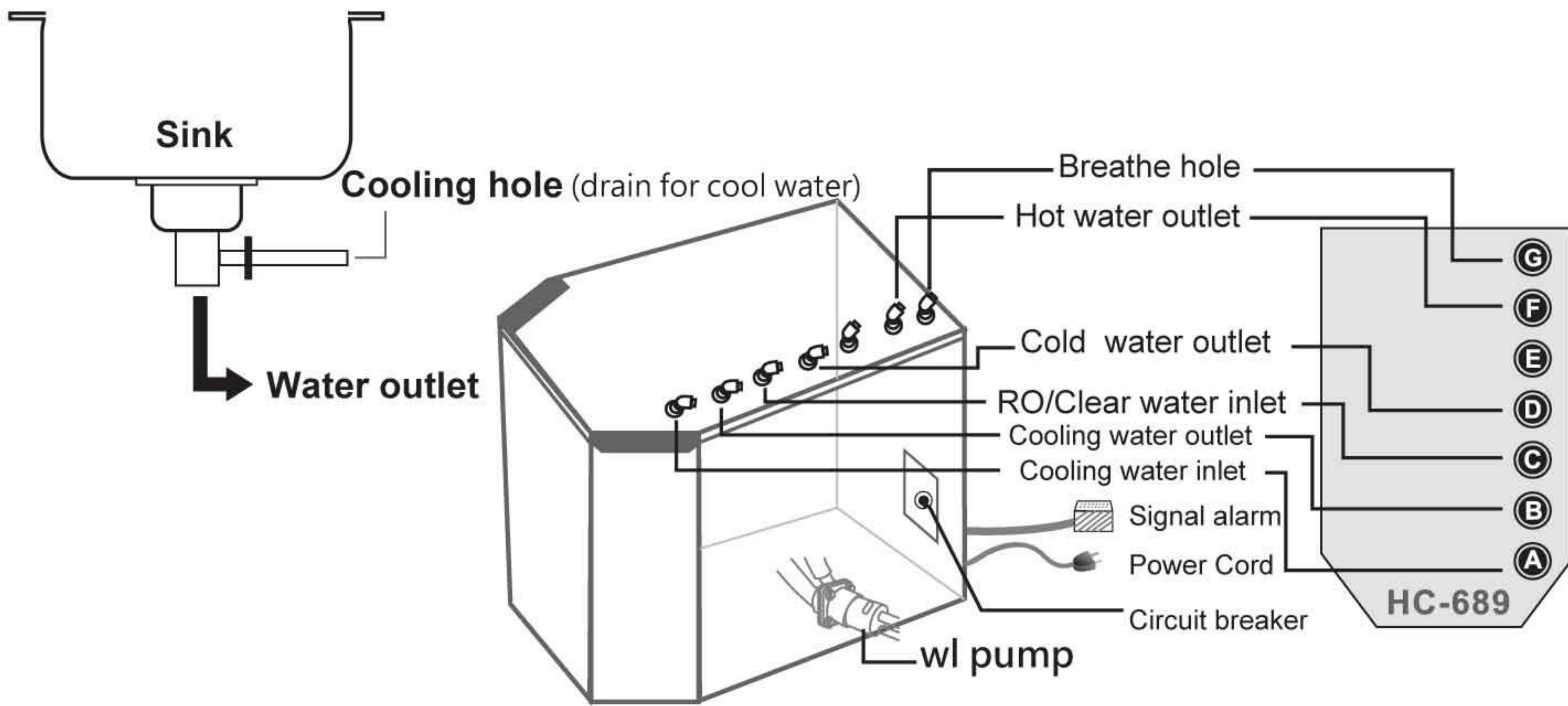
Step Four The important points for water supplying

- 1. The operating water pressure for the water dispenser is 14~36psi(1~2.5kg/cm²)
- 2. If the water pressure can't reach minimum or lower than minimum water pressure at 98kPa (1kg/cm2), you will need to boost the pressure before installation.
- 3. The length of water pipe must be within 7 meters, and do not roll it or twist it.  
Do not use longer pipe, it might cause the water supply shortage due to the lower water pressure.
- 4. The inlet water has to be connected to the water after filtration treatment.
- 5. Install the inlet water pipe away from the fire, inflammables or chemical.

Step Five Install the inlet water pipes.

- 1. Please connect water inlet of the unit to water purifier that equipped to the unit, and the water purifier should use 1/4" of RO tube to connect to the unit inlet.
- 2. When install the unit, press the cold water button to discharge the air from cold water tank, and when water flow out from cold water tank smoothly, the air is out.  
This is only required for first time installation, for further use, no need to do it again.
- 3. When connecting to the pipe, be sure to use Teflon or other sealed material on the valve to seal the connection and prevent it from leakage.

PC-888 (Hot & Cold w Pump)



Item	A	B	C	D	F	G
	Cooling water inlet	Cooling water outlet	RO/Clear water inlet	Cold water outlet	Hot water outlet	Breathe hole
Size	1/4"	1/4"	1/4"	1/4"	1/4"	3/16"
Material	PE	silica gel	PE	silica gel	silica gel	silica gel

INSTALLATION GUIDELINE

Main panel use instruction

**Warning**

Please follow all information on this instruction to avoid fire, burst , effects lost , hurt or accident.

Installation

- 1. Please read carefully before using this machine.
- 2. The manual includes all information of user installation, instruction and maintenance for the machine.
- 3. Warranty doesn't extend to any product or any problem that is defected due to misuse or safety careless.
- 4. Make sure the house electric ground connection conformed to local related regulation to ensure the electric safety. (Do not use extended line.)
- 5. When the power plug is damaged, please contact the regional agent; ask for qualified person to change for you.
- 6. Put the dispenser in right position, where the plug is easy to see and is power can be turned off easier if any accident.
- 7. Do not lie down or upside down the water dispenser, to avoid the dispenser from damage or causing any danger.
- 8. Use the hose kit to connect to the pipe, don't cycle the hose kit.

Children Safety

- 1. Do not let children or elder person use the machine without watching.
- 2. he temperature of the dispenser boiled water stays above 90 degree C, please pay attention to the children when using, or do not let the children use it without watch.

Maintenance

- 1. Do not splash water on the dispenser, in case of damage on the parts or cause the streak.
- 2. Do not wipe the panel by using chemical or strong acid or base cleaner.
- 3. Do not put heavy stuff on the top of dispenser, it might defect the shape and function.
- 4. Do not place the dispenser near to any petrol, any inflammable liquid or gas.
- 5. Do not maintain or change any part of the dispenser or try to fix any problem by yourself.

Power Cord

- 1. Use individual socket for the dispenser power cord. One socket supply with one power cord only.
- 2. Do not overload the wall socket. The overload of the socket, the loose or damage of the extended line, or the damage of the power cord might be dangerous to cause the fire or the streak.
- 3. Please check the dispenser regularly, pay attention to the power cord and the shape, if any problem, please stop using and contact the authorized supplier or agent to change for you.
- 4. Do not twist, kink, or nip the power cord, and pay attention to the connection of the power cord, like the wall socket and the external wire connection.

Electrics Ground Connection

- 1. The dispenser has to connect with electrics ground connection very well. If any problem is happened, the grounding will supply the electric circuit a small resistance to lower down the possibility of streak. There is one wire for grounding inside the package.
- 2. Use suitable socket for the power cord. The installation of the socket and grounding must meet the local regulations.
- 3. If you are not sure the grounding is connected with the dispenser very well, please ask for qualified electrician or maintenance department to inspect for you, if the problem, please ask them to change for you.



# PC-888

## Touch Panel User Instructions

### POWER ON/OFF

Touch for 5 seconds will turn on the power of the tap, conversely, press again 5 seconds will turn off the power. (LED light will be flashing)

### RE-BOIL/SAFETY LOCK

Before dispense hot water, you'll need to touch "SAFETY LOCK" to release the lock first. Also, the hot water will not dispense when temperature is under 85 degree C, and the LED light of "SAFETY LOCK" will be ON and then automatically re-boiling the hot water; NO hot water can be dispensed when temperature is under 85 degree C.

### CHILLED WATER

Puretron



### POWER SAVING (Timer setting)

Touch for 3 seconds to enter the power sleep setting. Adjust the timer for 1H by touch one second, and the power will sleep for 1H. If you touch the icon for few seconds, the timer will set at 5H and the power will sleep for 5H. and so on (Timer: 1H~72H) When timer is up, the dispenser will re-start automatically. (when setting timer, the water re-filling and compressor will temporary off, but still can dispense the water in the chilled water tank.

### HOT WATER

Touch "SAFETY LOCK" first to release the lock before touch "HOT WATER" to get hot water. When the hot water temperature is under 85 degree C, if you press "HOT WATER", the icon will be flashing, and NO hot water will be dispensed.

### \*Smart Design\*:

Touch "Hot Water" icon or "Chilled Water" icon one second will continuously dispense water for 50 seconds; If touch the icon for few seconds, the water will be stopped when you leave the icon.

## Attention!!

\*\* The hot water will not be dispensed when temperature is under 85 degree C.

\*\* When not water flow in hot water tank, display will show "EP", and will not dispense any water.

## PC-888

### INSTALLATION GUIDELINE

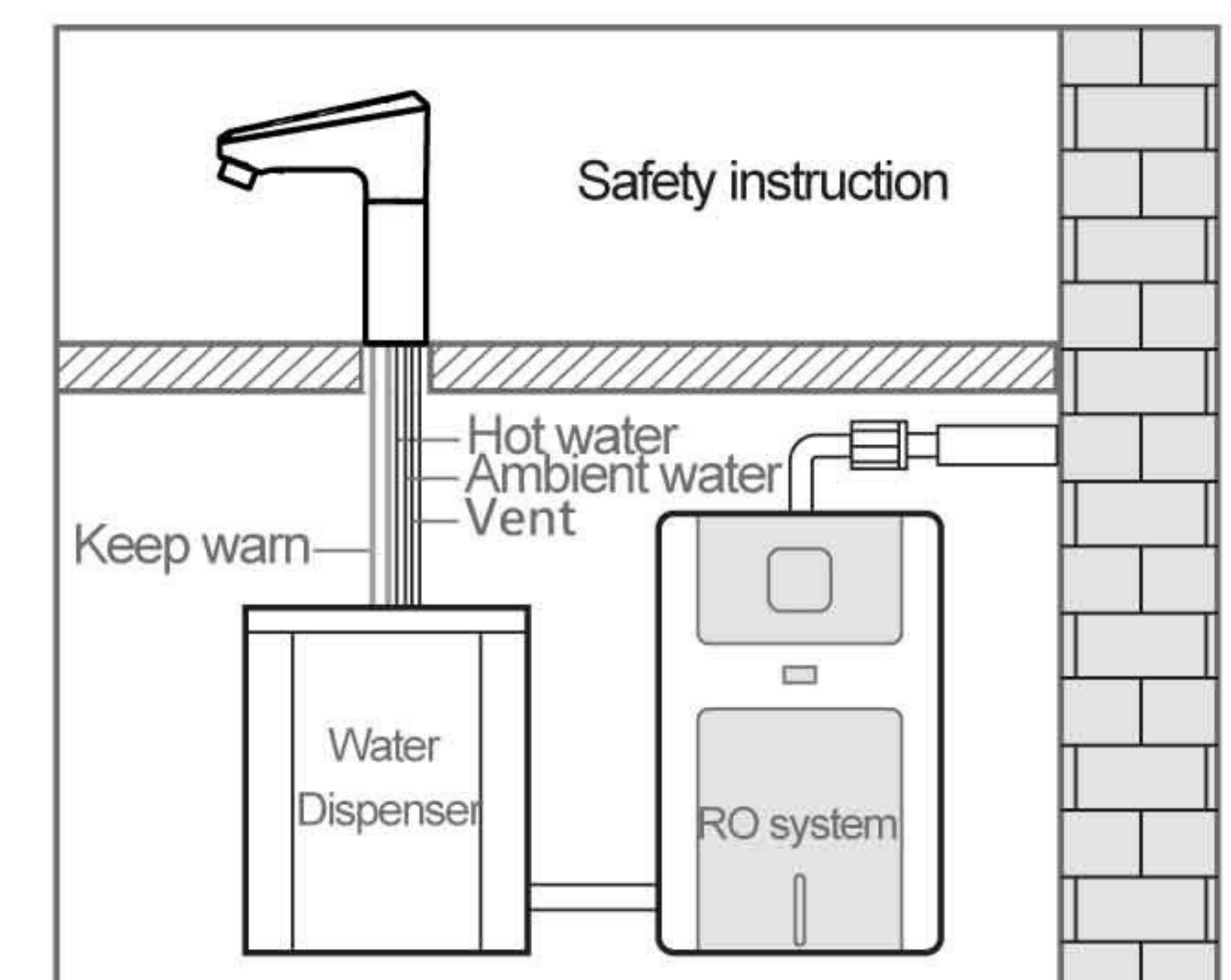
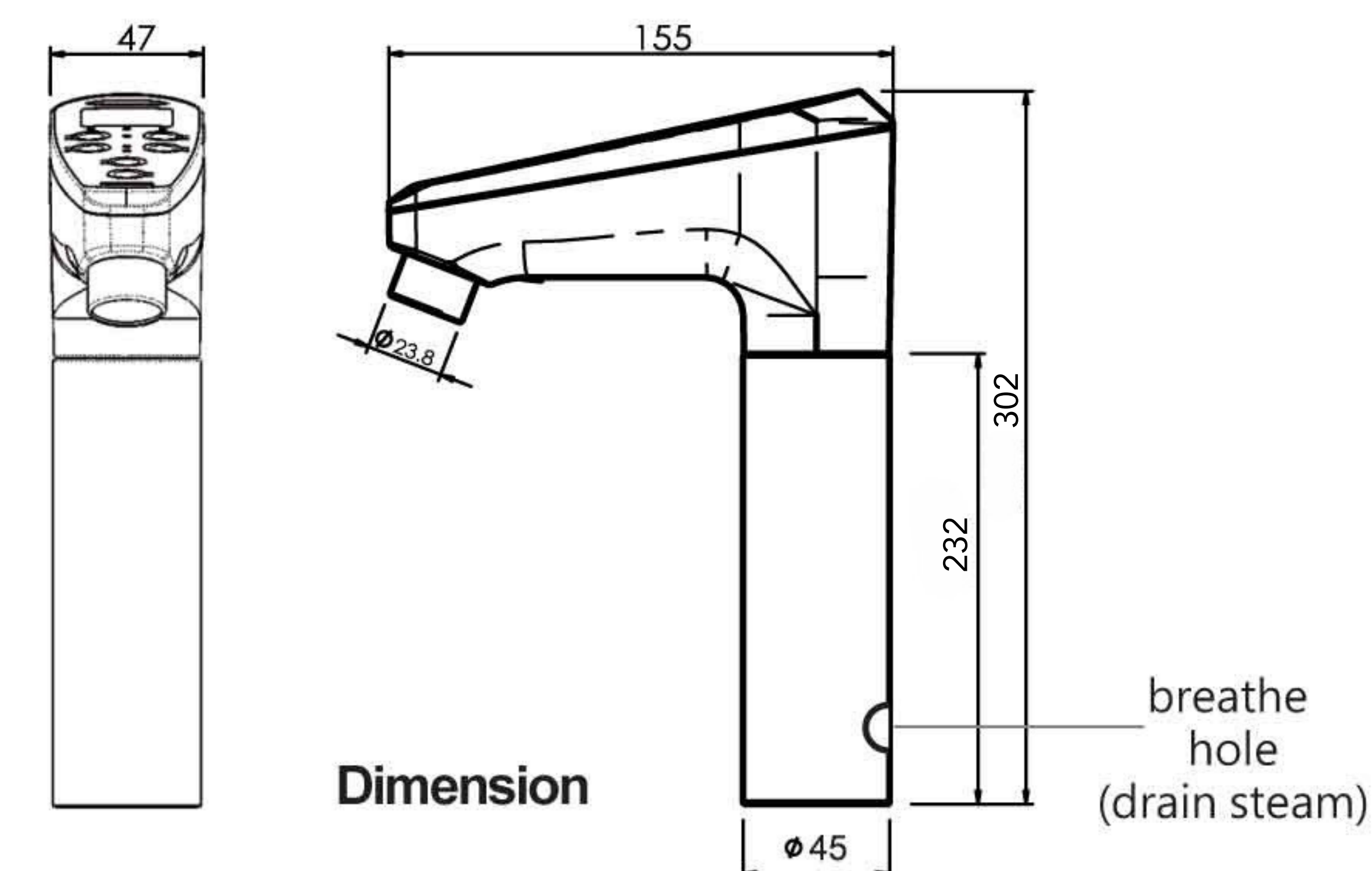
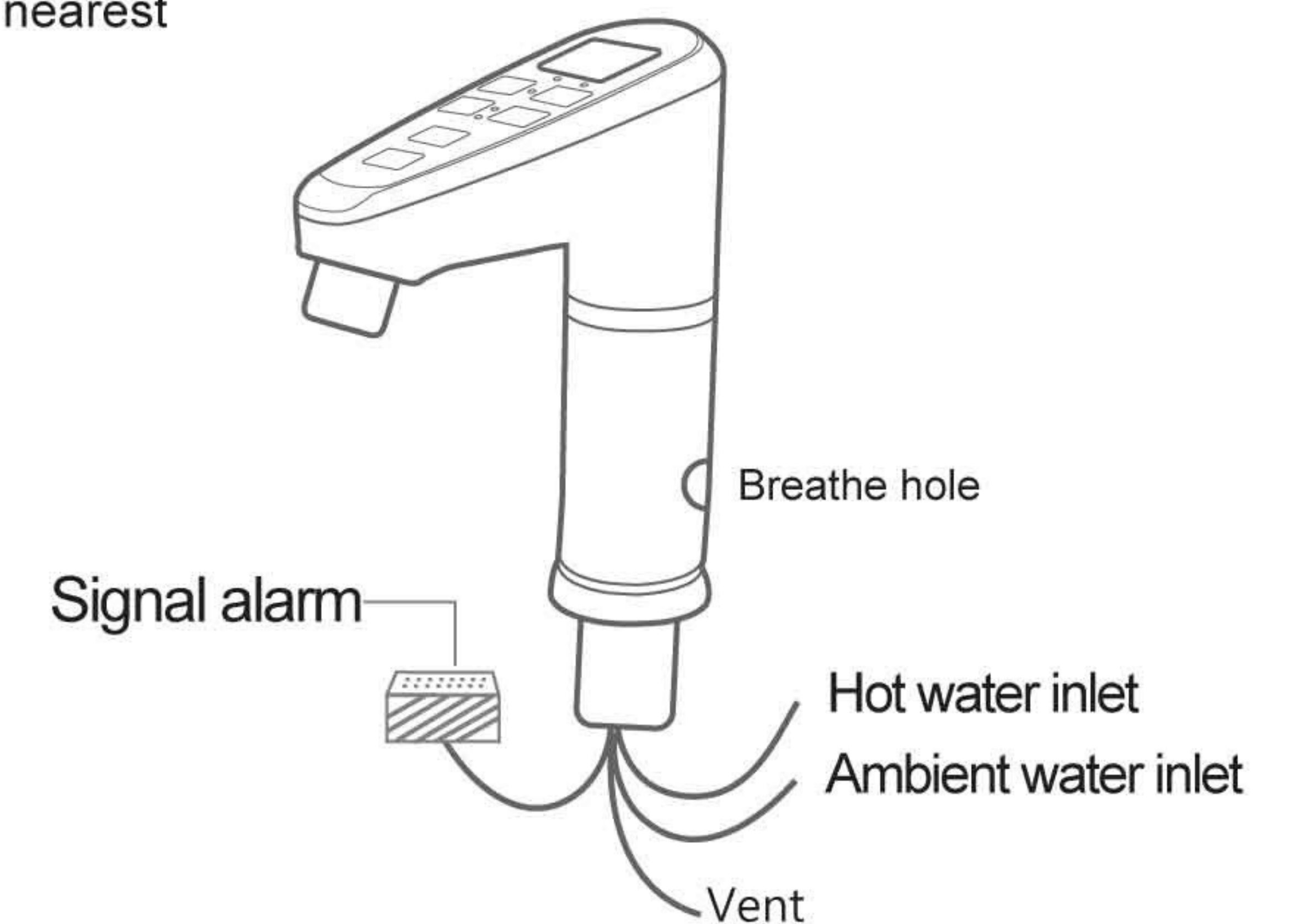


Attention for assembling engineer: the outlet silica gel should be adjusted to a suitable length according to the place of the system. Please cut the additional silica gel after you settle down the system in the correct place to avoid any delaying on output water.

### Step one

Drill a hole on the closet. Please choose the nearest place to connect to the water pipe easily.

※wl pump



### Step two Preparing the electric ground connection and turn on the power.

1. The product has to be used in correct voltage & Hertz according to the user manual, and connect to the power by an individual power socket.
2. The suitable position for the power cord is a place that is easy to see and near the dispenser but not in the back of the dispenser and keep the distance of dispenser for 1 meet. The power cord should be grounding correctly, and the socket should not be connected to other plug or adapter for other electric parts. Turn on the breaker which is inside the dispenser.
4. Press the "Re-Boiling" button for 5 seconds to turn on the power. Press the "Re-Boiling" button for 5 seconds when you need to turn off the power.
5. Per our suggestion, the electric faucet should be assembled 40cm higher than HC-689 water dispenser to avoid drops caused by left pressure inside.



**Step Six Final installation and inspection**

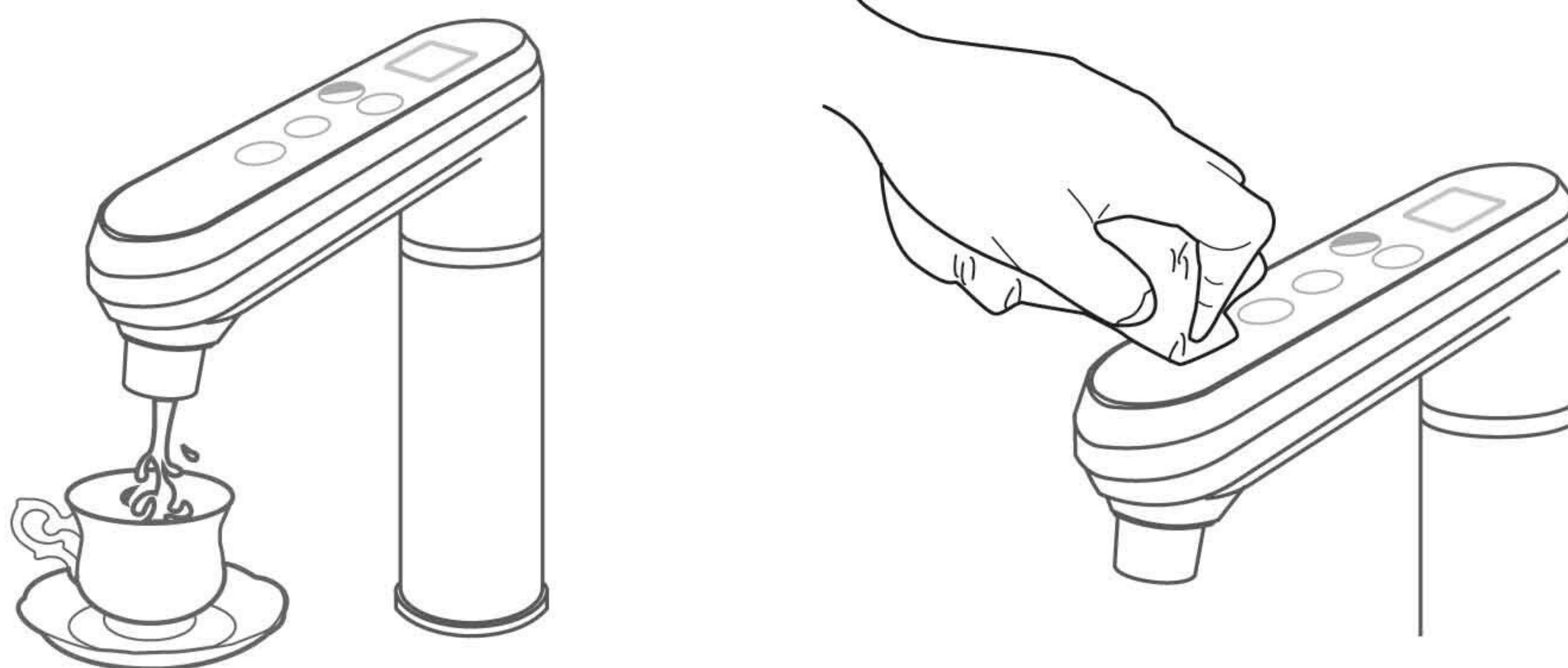
1. Use the wrench to check the pipe is tightened or not.
2. Plug the power cord into the socket with well grounding, and then turn on the circuit breaker.
3. After installation, operating the dispenser. When the water gets in the machine, you may the operation, function, or any leakage problem.
4. When first time using the machine, there might be some air blocked inside the pipe, so please push the "Cold/Ambient water" button and wait until the water come out smoothly.
5. When the compressor is operating, please check if the water comes out from cooling water outlet pipe or not.

**Warning**

Warning: Every kind of filtration is different, and the time for making pure water is also different, please be patient for water inlet completed

**INSTALLATION GUIDELINE**

- Power on**
1. First boiled water may have peculiar taste and smell from the pipe or sink of the dispenser.
  2. Please waste the first 4 liters of hot water, and first 2 liters of cold/ambient water for the first run.
  3. After the machine is set up, please run the machine over 40 minutes and the temperature will reach 100 degree C.
  4. If the machine has not been used for a period, please re-do above steps.
- How to get the water**
1. You can choose hot water or cold water.
  2. Please put the cup in the water tray and keep suitable distance from the
  3. Press the hot or cold water button on the panel; wait until the water water inlet.
  4. Wait 2~3 seconds after taking the water to get the water drop. comes to the cup.



Clean main panel: Do not wipe main panel area by chemical, strong acid or strong base cleaner.

**Electronic Tap-Touch Panel Type****PC-888****INSTALLATION GUIDELINE****Main Panel User Instruction****POWER ON/OFF**

Touch for 5 seconds will turn on the power of the tap, conversely, press again 5 seconds will turn off the power. (LED light will be flashing)

**RE-BOIL/SAFETY LOCK**

Before dispense hot water, you'll need to touch "SAFETY LOCK" to release the lock first. Also, the hot water will not dispense when temperature is under 85 degree C, and the LED light of "SAFETY LOCK" will be ON and then automatically re-boiling the hot water; NO hot water can be dispensed when temperature is under 85 degree C.

**AMBIENT WATER****CHILLED WATER****Puretron****POWER SAVING (Timer setting)**

Touch for 3 seconds to enter the power sleep setting. Adjust the timer for 1H by touch one second, and the power will sleep for 1H. If you touch the icon for few seconds, the timer will set at 5H and the power will sleep for 5H. and so on (Timer: 1H~72H) When timer is up, the dispenser will re-start automatically. (when setting timer, the water re-filling and compressor will temporary off, but still can dispense the water in the chilled water tank.

**HOT WATER**

Touch "SAFETY LOCK" first to release the lock before touch "HOT WATER" to get hot water. When the hot water temperature is under 85 degree C, if you press "HOT WATER", the icon will be flashing, and NO hot water will be dispensed.

**\*Smart Design\*:**

Touch "Hot Water" icon or "Chilled Water" icon one second will continuously dispense water for 50 seconds; If touch the icon for few seconds, the water will be stopped when you leave the icon.

**Attention!!**

\*\* The hot water will not be dispensed when temperature is under 85 degree C.

\*\* When not water flow in hot water tank, display will show "EP", and will not dispense any water.



## INSTALLATION GUIDELINE

### Installation

#### Step three Put the dispenser into the closet.

1. Adjust the best height and stable position for dispenser before install in.
2. Be careful when putting the machine in the closet and make sure if the hose kit and tubes are not twisted or damaged.

#### Step Four The important points for water supplying

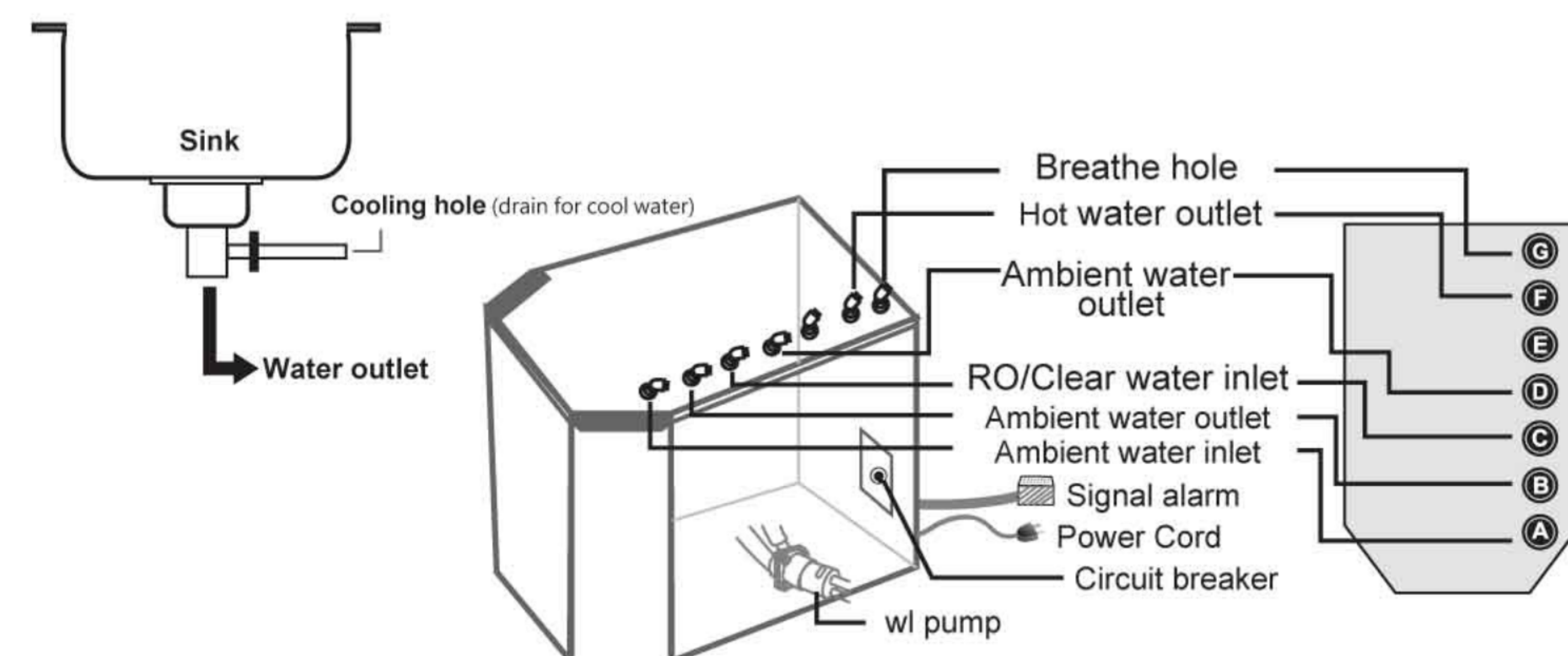
1. The operating water pressure for the water dispenser is 14~36psi (1~2.5kg/cm<sup>2</sup>)
2. If the water pressure can't reach minimum or lower than minimum water pressure at 98kPa (1kg/cm<sup>2</sup>), you will need to boost the pressure before installation.
3. Suggest use tap water for ambient water inlet.
4. The length of water pipe must be within 7 meters, and do not roll it or twist it.  
Do not use longer pipe, it might cause the water supply shortage due to the lower water pressure.
5. Suggest install solenoid valve before the inlet when you install filtration treatment to avoid any damage caused by overflow water.
6. Suggest install pressure limiting valve or flow restrictor 300cc to avoid any effecting on hot water temperature if the inlet water flow is too strong in case.
7. The inlet water has to be connected to the water after filtration treatment.
8. Install the inlet water pipe away from the fire, inflammables or chemical.

#### Step Five Install the inlet water pipes.

1. Please connect water inlet of the unit to water purifier that equipped to the unit, and the water purifier should use 1/4" of RO tube to connect to the unit inlet.
2. When connecting to the pipe, be sure to use Teflon or other sealed material on the valve to seal the connection and prevent it from leakage.

### PC-888

Item	A	B	C	D	F	G
	Ambient water inlet	Ambient water outlet	RO/Clear water inlet	Chilled water outlet	Hot water outlet	Breathe hole
Size	1/4"	1/4"	1/4"	1/4"	1/4"	3/16"
Material	PE	silica gel	PE	silica gel	silica gel	silica gel



### PC-888

#### INSTALLATION GUIDELINE

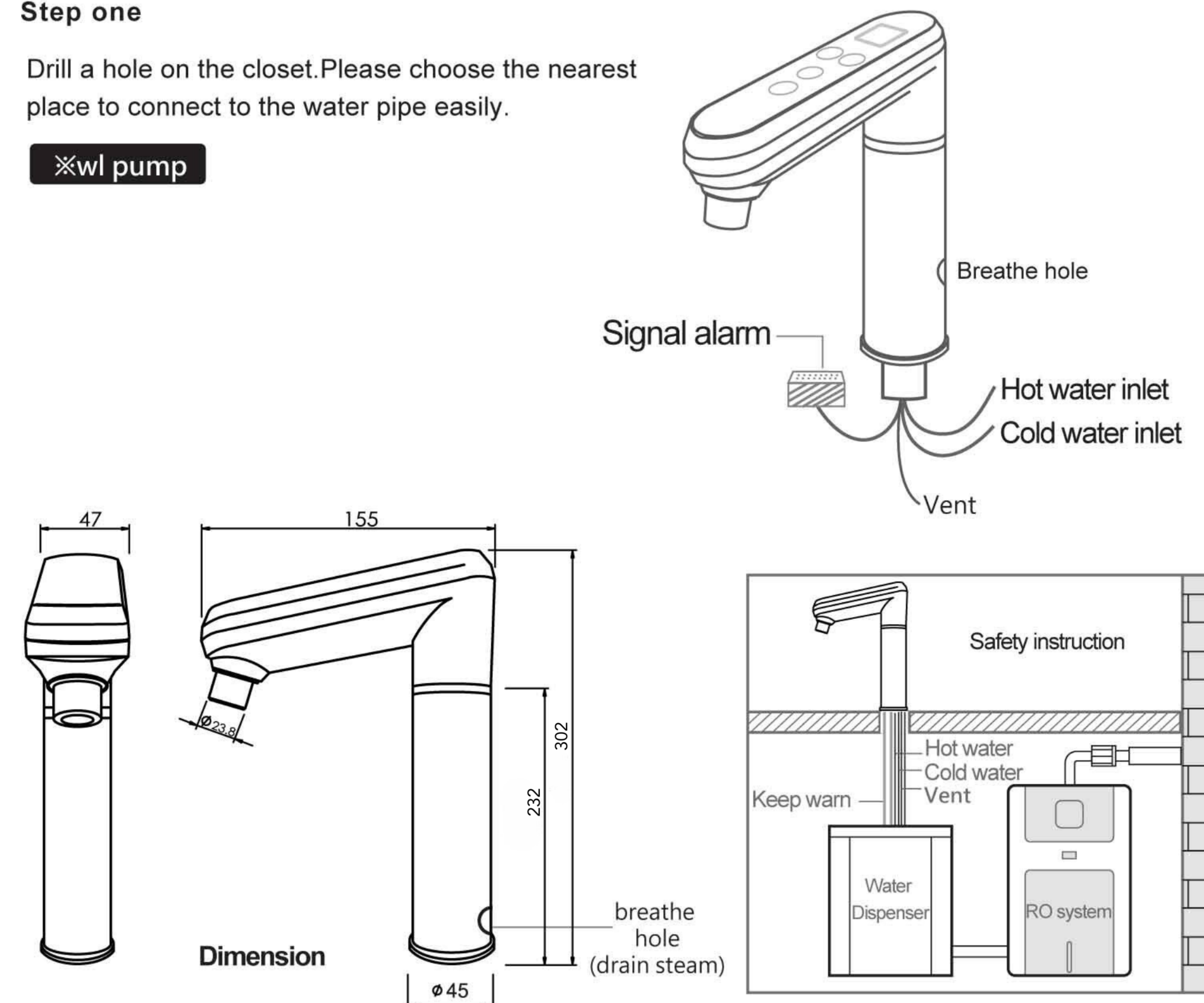


Attention for assembling engineer: the outlet silica gel should be adjusted to a suitable length according to the place of the system. Please cut the additional silica gel after you settle down the system in the correct place to avoid any delaying on output water.

#### Step one

Drill a hole on the closet. Please choose the nearest place to connect to the water pipe easily.

※wl pump



#### Step two Preparing the electric ground connection and turn on the power.

1. The product has to be used in correct voltage & Hertz according to the user manual, and connect to the power by an individual power socket.
2. The suitable position for the power cord is a place that is easy to see and near the dispenser but not in the back of the dispenser and keep the distance of dispenser for 1 meet.  
The power cord should be grounding correctly, and the socket should not be connected to other plug or adapter
3. for other electric parts.  
Turn on the breaker which is inside the dispenser.
4. Press the "Re-Boiling" button for 5 seconds to turn on the power. Press the "Re-Boiling" button for 5 seconds when you need to turn off the power.
5. Per our suggestion, the electric faucet should be assembled 40cm higher than HC-689 water dispenser to avoid drops caused by left pressure inside.



INSTALLATION GUIDELINE

Installation

Step three Put the dispenser into the closet.

- 1. Adjust the best height and stable position for dispenser before install in.
- 2. Be careful when putting the machine in the closet and make sure if the hose kit and tubes are not twisted or damaged.

Step Four The important points for water supplying

- 1. The operating water pressure for the water dispenser is 14~36psi (1~2.5kg/cm<sup>2</sup>)
- 2. If the water pressure can't reach minimum or lower than minimum water pressure at 98kPa (1kg/cm<sup>2</sup>), you will need to boost the pressure before installation.
- 3. Suggest use tap water for ambient water inlet.
- 4. The length of water pipe must be within 7 meters, and do not roll it or twist it.  
Do not use longer pipe, it might cause the water supply shortage due to the lower water pressure.
- 5. Suggest install solenoid valve before the inlet when you install filtration treatment to avoid any damage caused by overflow water.
- 6. Suggest install pressure limiting valve or flow restrictor 300cc to avoid any effecting on hot water temperature if the inlet water flow is too strong in case.
- 7. The inlet water has to be connected to the water after filtration treatment.
- 8. Install the inlet water pipe away from the fire, inflammables or chemical.

Step Five Install the inlet water pipes.

- 1. Please connect water inlet of the unit to water purifier that equipped to the unit, and the water purifier should use 1/4" of RO tube to connect to the unit inlet.
- 2. When connecting to the pipe, be sure to use Teflon or other sealed material on the valve to seal the connection and prevent it from leakage.

PC-888

Item	A	B	C	D	F	G
	Ambient water inlet	Ambient water outlet	RO/Clear water inlet	Chilled water outlet	Hot water outlet	Breathe hole
Size	1/4"	1/4"	1/4"	1/4"	1/4"	3/16"
Material	PE	silica gel	PE	silica gel	silica gel	silica gel

